



NOTE -  
Up street side of floor  
system to be 1" bent to  
assure drainage.

Floor Drain  
See Detail 5-B



DETAIL 4-B OF M.I. PIPE RAIL  
Scale 1/2"=1'-0"

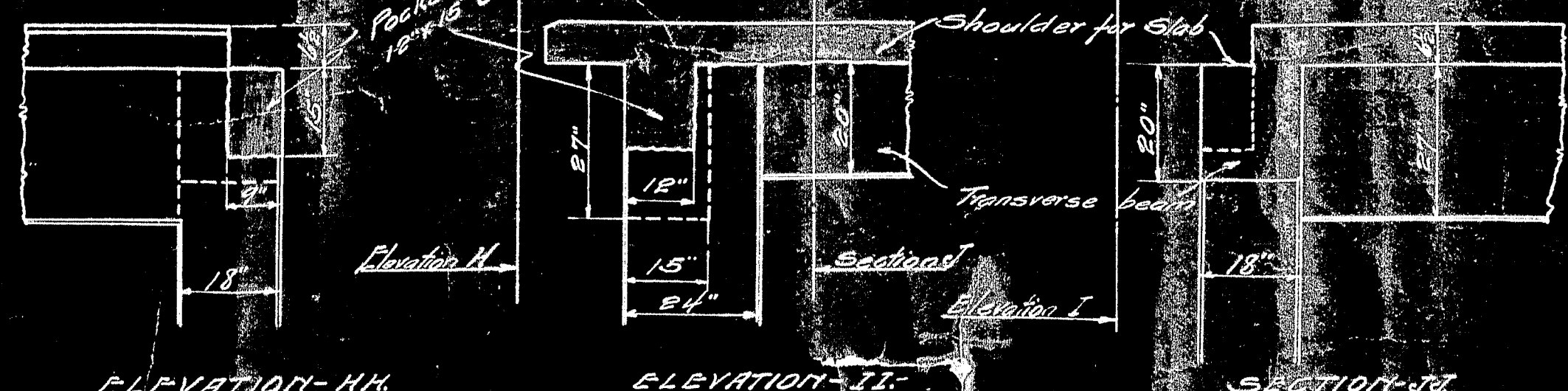
DETAIL 1-B HALF LONGITUDINAL SECTION  
Scale 1/2"=1'-0"

SECTION 3-B  
SHOWING CONSTRUCTION  
AT CROWN OF ARCH  
Scale 1/2"=1'-0"

NOTE -  
The distance from face  
of Arch to E. of longitudinal  
reinforcing should be 1/2 the  
depth of the Arch at that point.

NOTE -  
The 24" Hoops takes  
the place of the 30" Hoops  
in the center of expansion joint  
of bridge.

NOTE -  
Surface of Expansion joint  
to be covered with layers of  
greased paper.



DETAIL 6-B OF EXPANSION JOINT  
Scale 1/2"=1'-0"

DETAIL 1-B  
Scale 1/2"=1'-0"



